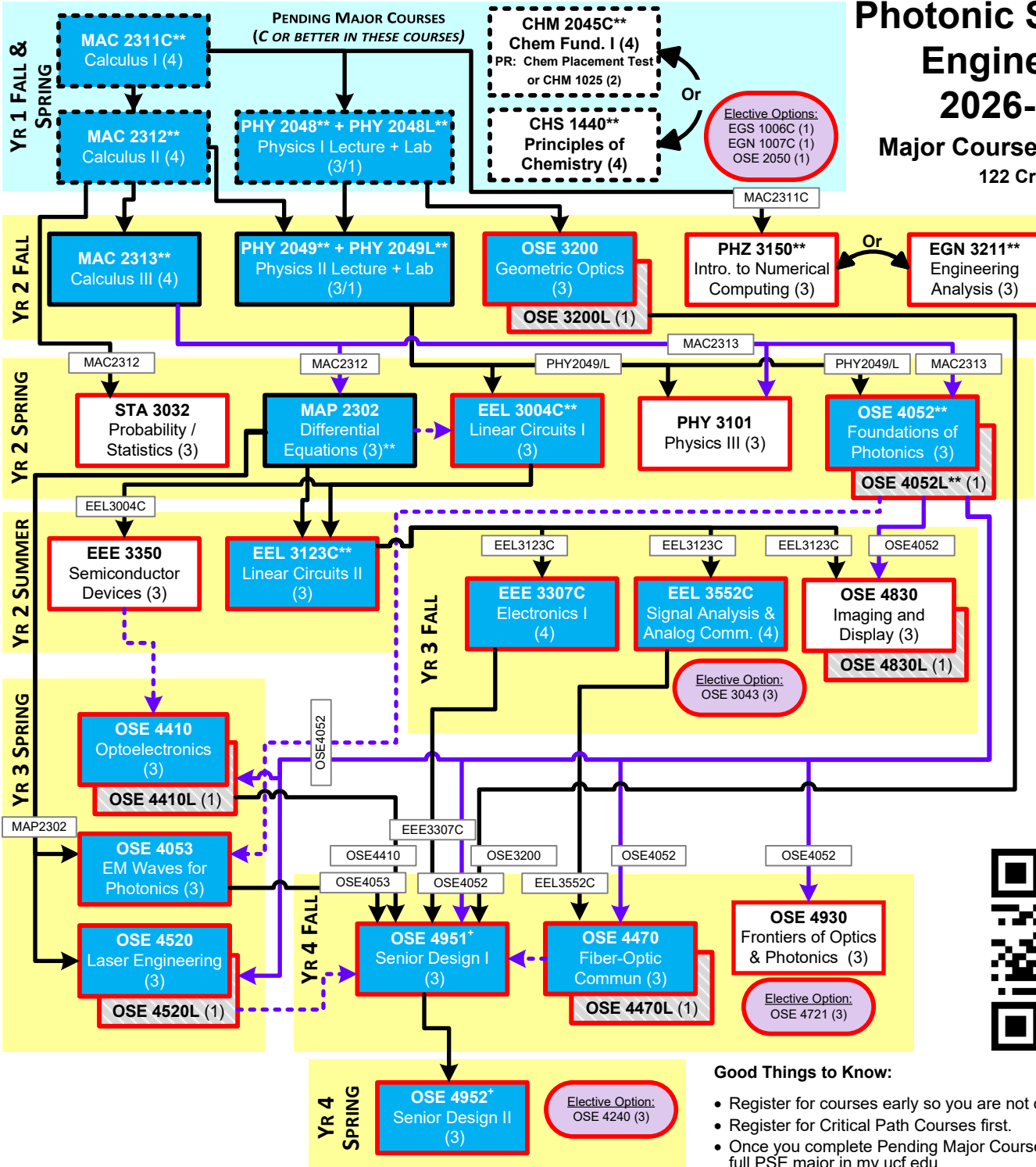


# Photonic Science & Engineering 2026-2027

**Major Courses Flowchart\***  
122 Credits



**KEY**

- PREREQUISITE: (solid arrow)
- COREQUISITE: (dashed arrow)
- CRITICAL PATH COURSES (blue box)
- Pre major requirements (dotted box)
- Lab courses (hatched box)
- Red Outlined Courses Part of Major GPA (red outline)
- Restricted Elective Options (red circle)



**Good Things to Know:**

- Register for courses early so you are not closed out.
- Register for Critical Path Courses first.
- Once you complete Pending Major Courses, change major to full PSE major in my.ucf.edu.

**Common Restricted Elective Options**

12 CR are needed to satisfy the restricted electives requirement. Electives shown on flowchart represent semesters in which courses are offered. Refer to myKnight Audit for all electives and catalog for prerequisites.

EGS 1006C Intro. To Engineering (1) <sup>1</sup>	EMA 4413 Fundamentals of Electronic Materials (3)
EGN 1007C Engr. Concepts and Methods (1) <sup>1</sup>	MAS 3105 Matrix & Linear Algebra (4) PR: MAC 2312
OSE 2050 Intro. to Photonic Engineering Design (1) <sup>2</sup>	OSE 4912 Directed Independent Research (1)
OSE3043 Analytical Methods for Optics (3) CR/PR: MAC 2312	OSE 4903H Honors Directed Reading (3)
OSE4721 Biophotonics (3) PR:OSE 3052	OSE 4970H Honors Thesis (3)
OSE4240 Intro. to Optical Design (3) CR/PR: OSE 4052, PR: OSE 3200	PHY 3650 Quantum Information Processing (3)
OSE 4953 Senior Design Double Major ECE (1) <sup>3</sup>	PHY 4604 Wave Mechanics I (3)
EEE 4309C Electronics II (4), completes an EE Minor	PHY 4605 Wave Mechanics II (3)
EEL 3470 EM Fields (3)	PHZ 3113 Introduction to Theoretical Methods (3)
	Selected EEL/PHY/Math 4XXX Courses

<sup>1</sup> EGS 1006C and EGN 1007C are open only to students with less than 30 earned credit hours.

<sup>2</sup> OSE 2050 is open to students who have not completed MAP 2302 Differential Equations

<sup>3</sup> OSE 4953 is open only to dual major ECE-PSE students and must be taken with EEL4914 and EEL4915L. 1 credit hour per semester.

Lab courses are required for PSE majors.  
2.25 Major GPA required for graduation.

\*\* A grade of C (2.0) or better required + EE/PSE Double Majors will be required to enroll in EEL 4914+OSE4953 and EEL4915L+OSE4953 to satisfy Senior Design requirements.

\*Flowchart is a suggested plan. Meet with advisor for personalized plan. Gen. Ed. courses not listed. In the event of an error, UCF Catalog takes precedence.

[www.creol.ucf.edu](http://www.creol.ucf.edu)  
[undergrad@creol.ucf.edu](mailto:undergrad@creol.ucf.edu)

**PSE Advising:** The PSE Advising Office is located in CREOL, Room A213 or email at [undergrad@creol.ucf.edu](mailto:undergrad@creol.ucf.edu)