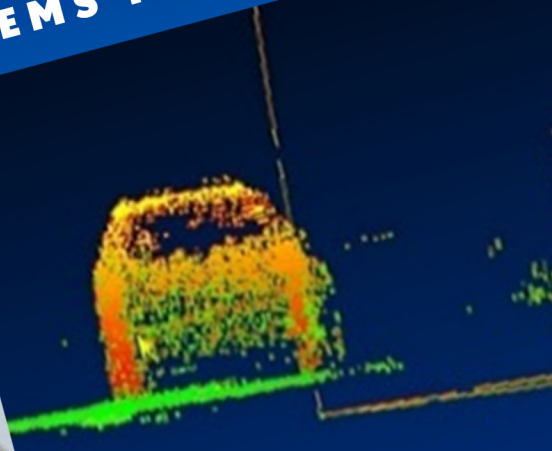
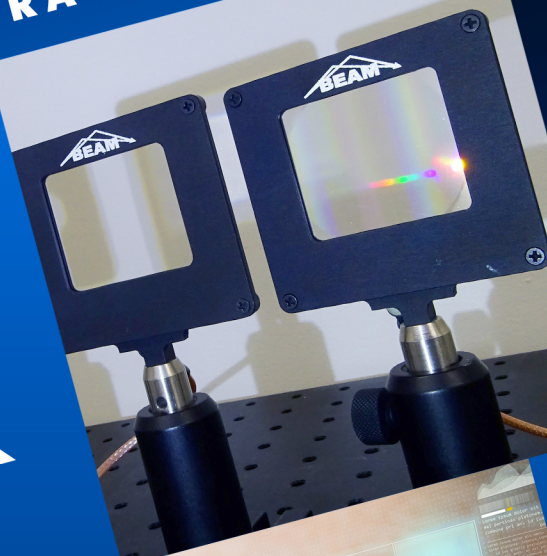


ACTIVE OPTICS FOR AR|VR, LiDAR AND FLEXIBLE DISPLAY TECHNOLOGY



WE SOLVE EXTRAORDINARY PROBLEMS IN OPTICS

Non-Mechanical
Beam Steering
LiDAR

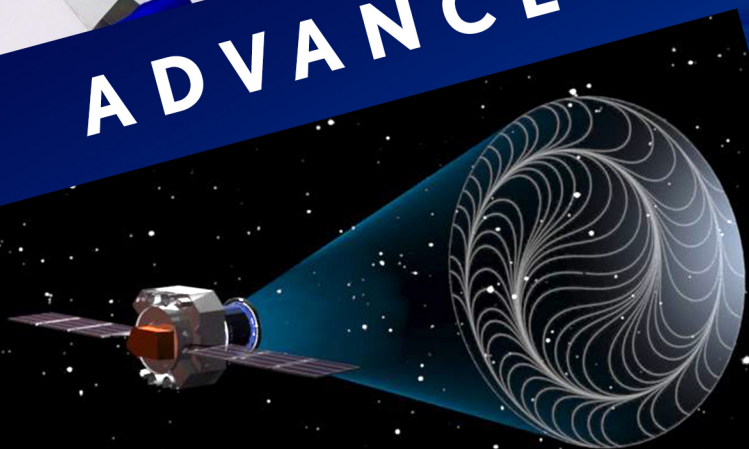


Pioneer
of Switchable Lenses

**AR
VR**



ADVANCE TECHNOLOGIES



1300 Lee Road, Orlando, FL , 32810, USA
Tel. (407) 734-5222 Fax (407) 969-0477
e-mail: sales@beamco.com, info@beamco.com
www.beamco.com





Beam Engineering for Advanced Measurements Co.

1300 Lee Road, Orlando, FL 32810

Phone 407-734-5222; e-mail: info@beamco.com; www.beamco.com

Internship Opportunity: Technicians, Research Assistants and Associates

Company information

BEAM is a photonics company which pioneered the breakthrough technology of planar optics: electrically controlled and switchable thinnest flat lenses, prisms, beam shapers, holograms, that make basis for adaptive ophthalmic lenses, AR/VR optics, all-electronic LiDARs for autonomous-navigation, ultralight space telescopes, optical communication for satellites and even solar sails.

BEAM Co., founded in 1996 by world renown researchers Dr. Boris Ya. Zeldovich and Dr. Nelson Tabiryan, currently employs scientists and engineers in optics, lasers, and materials with 8 Ph.D.s among its staff. BEAM Co. possesses advanced development labs furnished with wide variety of lasers, opto-mechanical equipment, advanced characterization and production systems, clean rooms, including a separate chemical synthesis facility. BEAM Co. customers include most innovative Governmental and commercial organizations, many of which are household names.

Responsibilities (training provided)

- Assisting BEAM Co. engineers in their research and development tasks
- Performing component and system characterization using optical and electronics equipment
- Operating laser setups
- Following optical fabrication processes in a cleanroom environment
- Processing and documenting data
- Opto-mechanical system assembly

Qualifications

Ability to provide timely and quality work with limited supervision, ability and flexibility to work well under pressure; functioning as a member of the team committed to the project outcome; maintaining focus and motivation even for repetitive tasks; experience operating test equipment such as oscilloscopes, power meters, spectrometers, etc.

Preferred Credentials & Education

Bachelor's degree in Optics, Physics, or Electrical Engineering

Minimal requirement: High school diploma or equivalent

Laser/Electro-Optical Courses

Salary and Benefits

BEAM Co. offers competitive compensation and a generous benefits package.